



MRL CRG – Cleanaway Update

7 February 2019

Site Update – Overview

- Cell 3B – intermediate capping
- Cell 4A – active cell
- Cell 4B-1 – leachate aggregate being placed . Expected completion mid-March
- Cell 4B-3 – clay subgrade being placed. Expected completion late July.
- Cell 4B-2 – next cell to be constructed. Timing TBC.



Site Update – Overview



Litter Response – Litter Management Plan

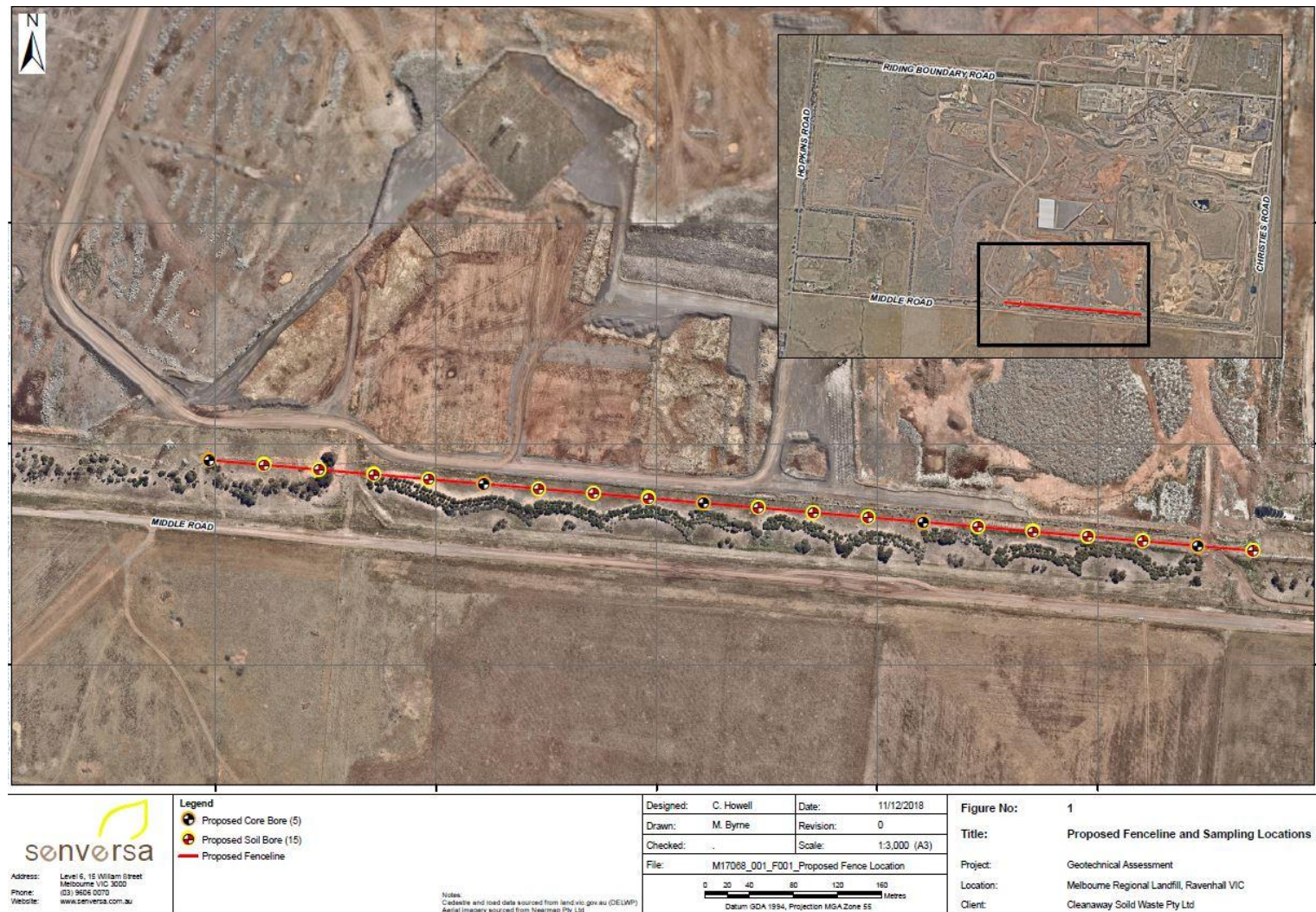
Average Wind Speed (kph)	Actions
0 – 25	Business as usual. Monitor site conditions with standard inspection frequency. Ensure that daily cover material is available and ready for placement if required. Where on-site litter is present outside of the litter controls, then the Labour Leading Hand is to organise collection.
25 - 50	<p>Operations Supervisor and Technical Supervisor meet to re-asses the daily fill plan, and the controls on the site. Site conditions are to be monitored in accordance with Section 4.4.</p> <p>Daily cover and/or the Tarpomatic is to be available at the working face for immediate use (if required). Assess if the working face size can be reduced. Inform weighbridge and customers of potential delays at the working face.</p> <p>Assess safety for certain trucks (eg. Semi Tippers). Encourage customers to delay the disposal of waste until after the high wind event has passed.</p> <p>Litter picking crews to be mobilised to maintain litter fences and collect any wind-blown litter.</p> <p>Technical Supervisor and Operations Supervisor to provide regular updates to the Western Operations Manager and the Regional Manager.</p>
>50	<p>Working face operations are to be modified by reducing working face size. Customers and the weighbridge are to be informed of the expected delays. Adequate daily cover stockpile is required at the working face to cover all exposed waste.</p> <p>Site will be closed to semi tippers.</p> <p>If it is safe to do so, litter picking crews will be mobilised.</p> <p>Site conditions will be monitored at a frequency equal to or greater than what is specified in Section 4.4. If perimeter litter controls have failed, then operations are to cease, and the site closed. Refer to Section 5.3 for site closure.</p>

Litter Response – Upcoming Works

- **12 m perimeter fence:** Geotechnical works completed in January 2019. Contractor engagement expected early April 2019.
- **6 m perimeter fence:** Approximately 1.5 km on-site. An additional 2 km of fence to be installed in the coming months. Green – current nets. Blue – future nets.

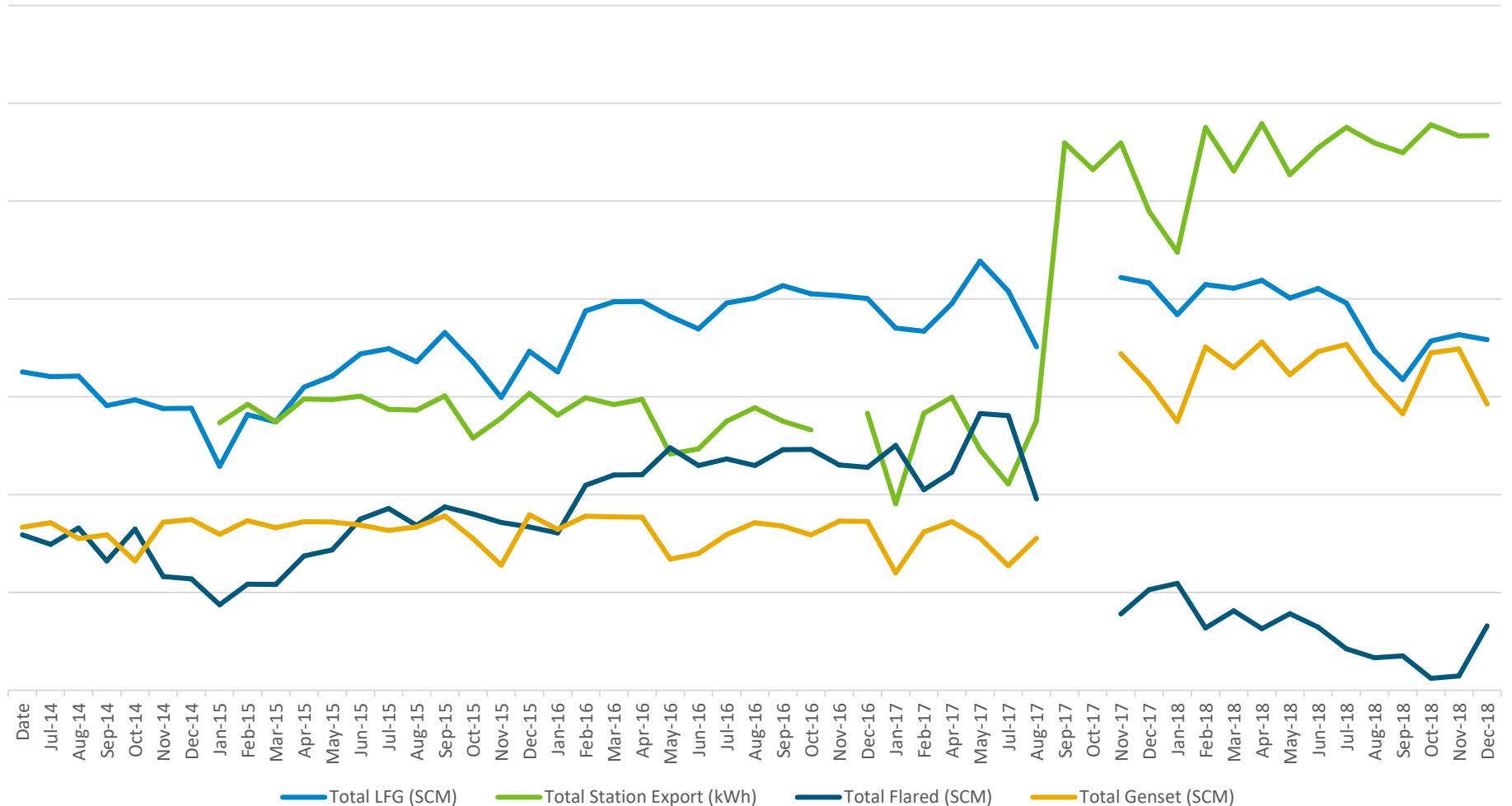


Litter Response – Upcoming Works

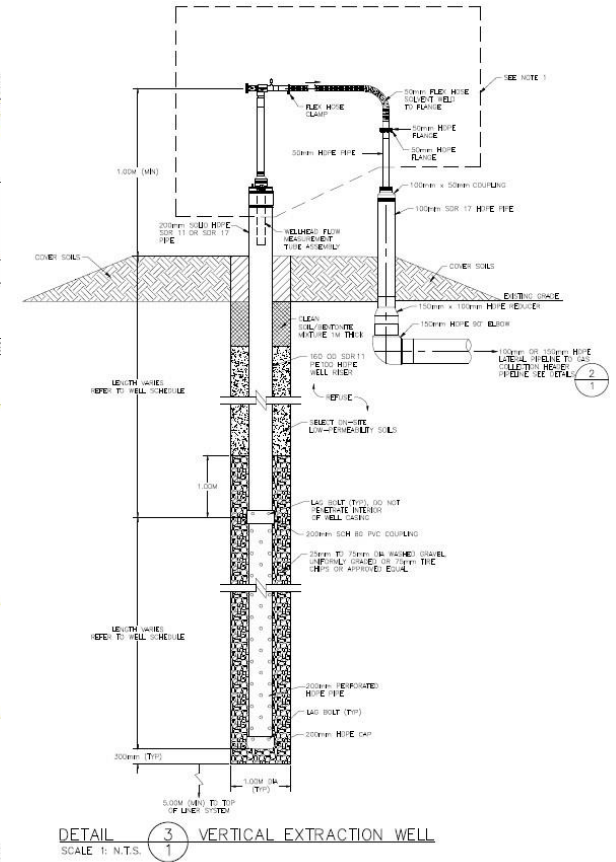
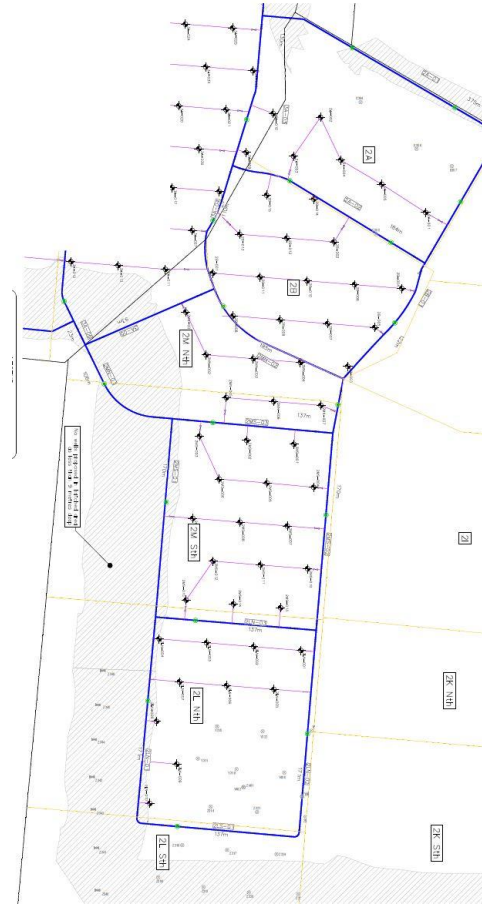


Site Update – Biogas Plant

Monthly LFG Production



Site Update – New LFG Well Installation



Site Update – Groundwater Monitoring Event



Source: <https://esemag.com/water/groundwater-sampling/>