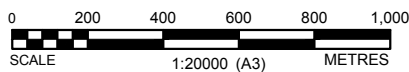
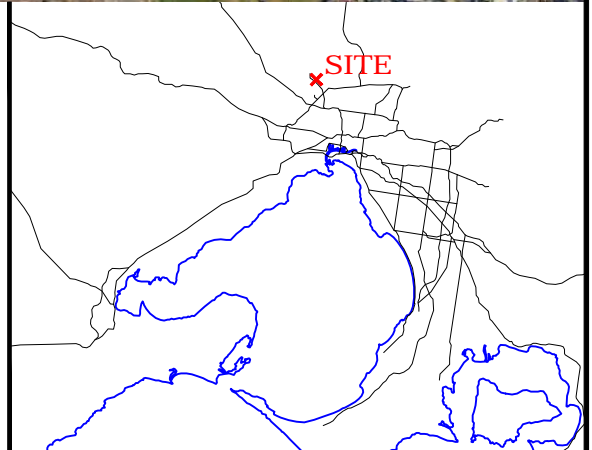




SOURCE: NEARMAP.COM, DATED 03.08.14



The information included on this graphic representation has been compiled from a variety of sources and is subject to change without notice. Kleinfelder makes no representations or warranties, express or implied, as to accuracy, completeness, timeliness, or rights to the use of such information. This document is not intended for use as a land survey product nor is it designed or intended as a construction design document. The use or misuse of the information contained on this graphic representation is at the sole risk of the party using or misusing the information.



FIGURE

SITE LOCATION PLAN

1

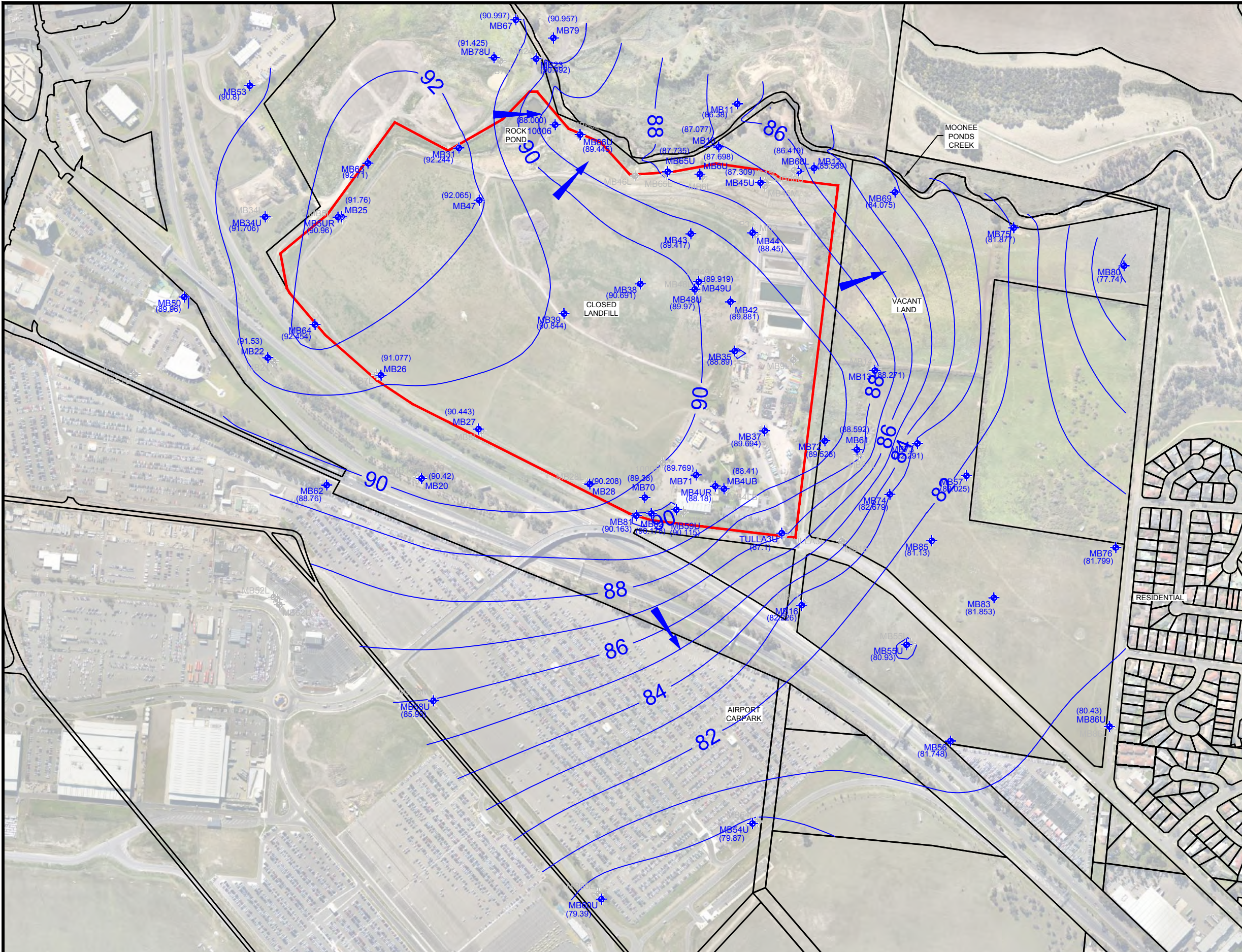


PROJECT:	20143795.001A
DATE DRAWN:	12.11.14
DRAWN BY:	LZ
CHECKED BY:	MW
FILE NAME:	20143795.001A-2.dwg

2014 TECHNICAL REPORT FOR AUDITOR REVIEW
 TULLAMARINE CLOSED LANDFILL
 WESTERN AVENUE
 WESTMEADOWS, VICTORIA

PLOTTED: 27-Oct-2016, 02:41PM, Iziemelis

ATTACHED IMAGES: "1-1.jpg", "golfer_base.jpg", "LowerTDSShading.jpg", "north.jpg", "site2.jpg", "UpperTDSShading.jpg"
CAD FILE: O:\09_Projects\DELTEK Projects\Regular\2014\20143795.001A_TCL_Tulle_2014 TRAR\Figures_LAYOUT: 3A
MELBOURNE, AU



LEGEND

- MONITORING WELL USED IN GENERATING CONTOURS
- MONITORING WELL NOT USED FOR CONTOURING
- (90.691) GROUNDWATER ELEVATION (mAHD)
- 187.30 INFERRED GROUNDWATER ELEVATION CONTOUR
- INFERRED GROUNDWATER FLOW DIRECTION

NOTE: ALL LOCATIONS ARE APPROXIMATE. DIMENSIONS IN METRES (m).

The information included on this graphic representation has been compiled from a variety of sources and is subject to change without notice. Kleinfelder makes no representations or warranties, express or implied, as to accuracy, completeness, timeliness, or rights to the use of such information. This document is not intended for use as a land survey product nor is it designed or intended as a construction design document. The use or misuse of the information contained on this graphic representation is at the sole risk of the party using or misusing the information.

PROJECT:	20143795.001A
DATE DRAWN:	12.11.14
DRAWN BY:	LZ
CHECKED BY:	MW
FILE NAME:	20143795.001A-2.dwg

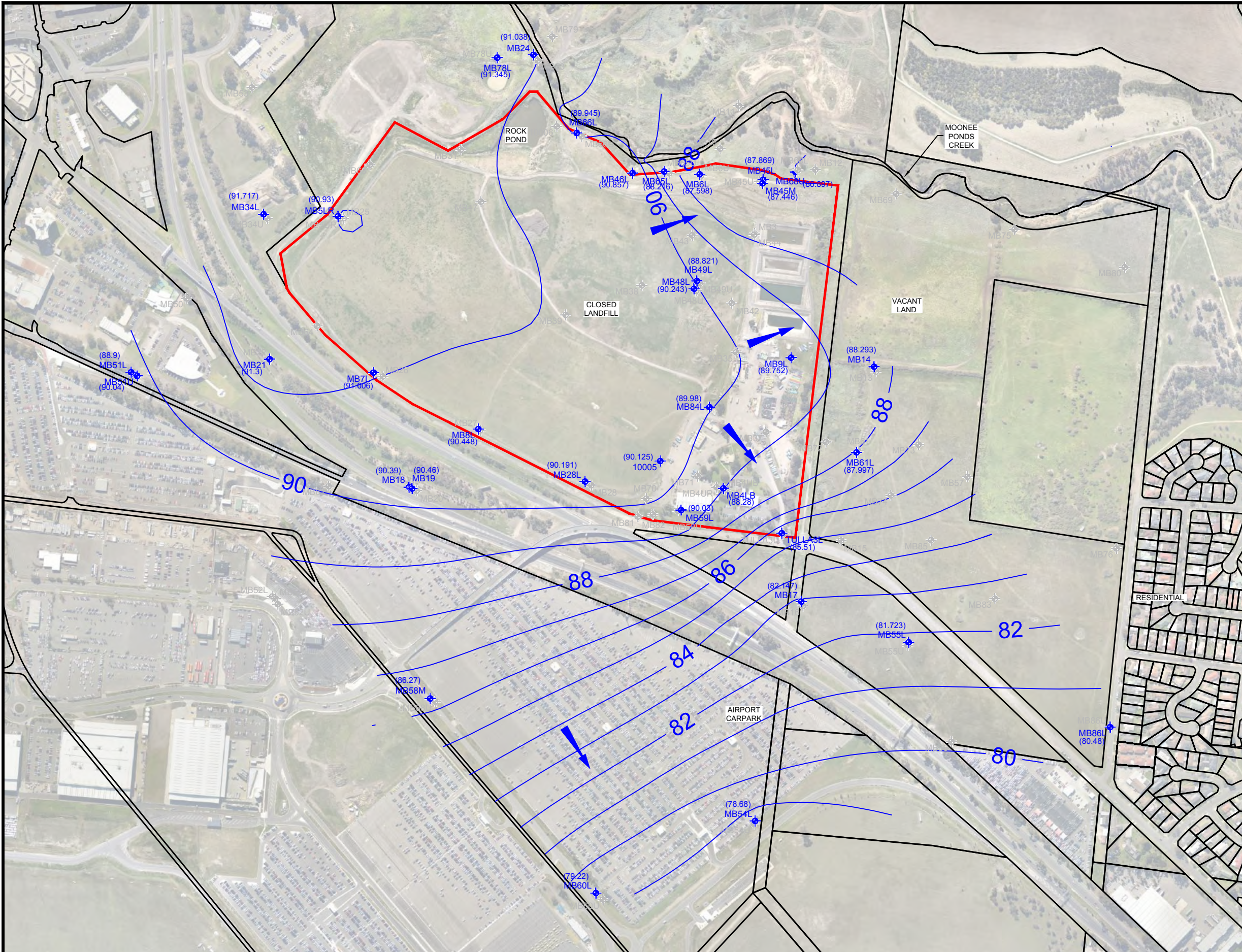
**GROUNDWATER ELEVATION CONTOURS
- UPPER AQUIFER
(AUGUST 2014)**

2014 TECHNICAL REPORT FOR AUDITOR REVIEW
TULLAMARINE CLOSED LANDFILL
WESTERN AVENUE
WESTMEADOWS, VICTORIA

FIGURE
3A

PLOTTED: 27-Oct-2016, 02:41PM, Iziemelis

ATTACHED IMAGES: "1-1.jpg", "golfer_base.jpg", "LowerTDSShading.jpg", "north.jpg", "site2.jpg", "UpperTDSShading.jpg"
 CAD FILE: O:\09_Projects\DELTEK Projects\Regular\2014\20143795.001A_TCL_Tulle_2014 TRAR\Figures_LAYOUT: 3B
 MELBOURNE, AU



LEGEND

- MONITORING WELL USED IN GENERATING CONTOURS
- MONITORING WELL NOT USED FOR CONTOURING
- (90.691) GROUNDWATER ELEVATION (mAHD)
- 187.30 INFERRED GROUNDWATER ELEVATION CONTOUR
- INFERRED GROUNDWATER FLOW DIRECTION

NOTE: ALL LOCATIONS ARE APPROXIMATE. DIMENSIONS IN METRES (m).



The information included on this graphic representation has been compiled from a variety of sources and is subject to change without notice. Kleinfelder makes no representations or warranties, express or implied, as to accuracy, completeness, timeliness, or rights to the use of such information. This document is not intended for use as a land survey product nor is it designed or intended as a construction design document. The use or misuse of the information contained on this graphic representation is at the sole risk of the party using or misusing the information.

PROJECT:	20143795.001A
DATE DRAWN:	12.11.14
DRAWN BY:	LZ
CHECKED BY:	MW
FILE NAME:	20143795.001A-2.dwg

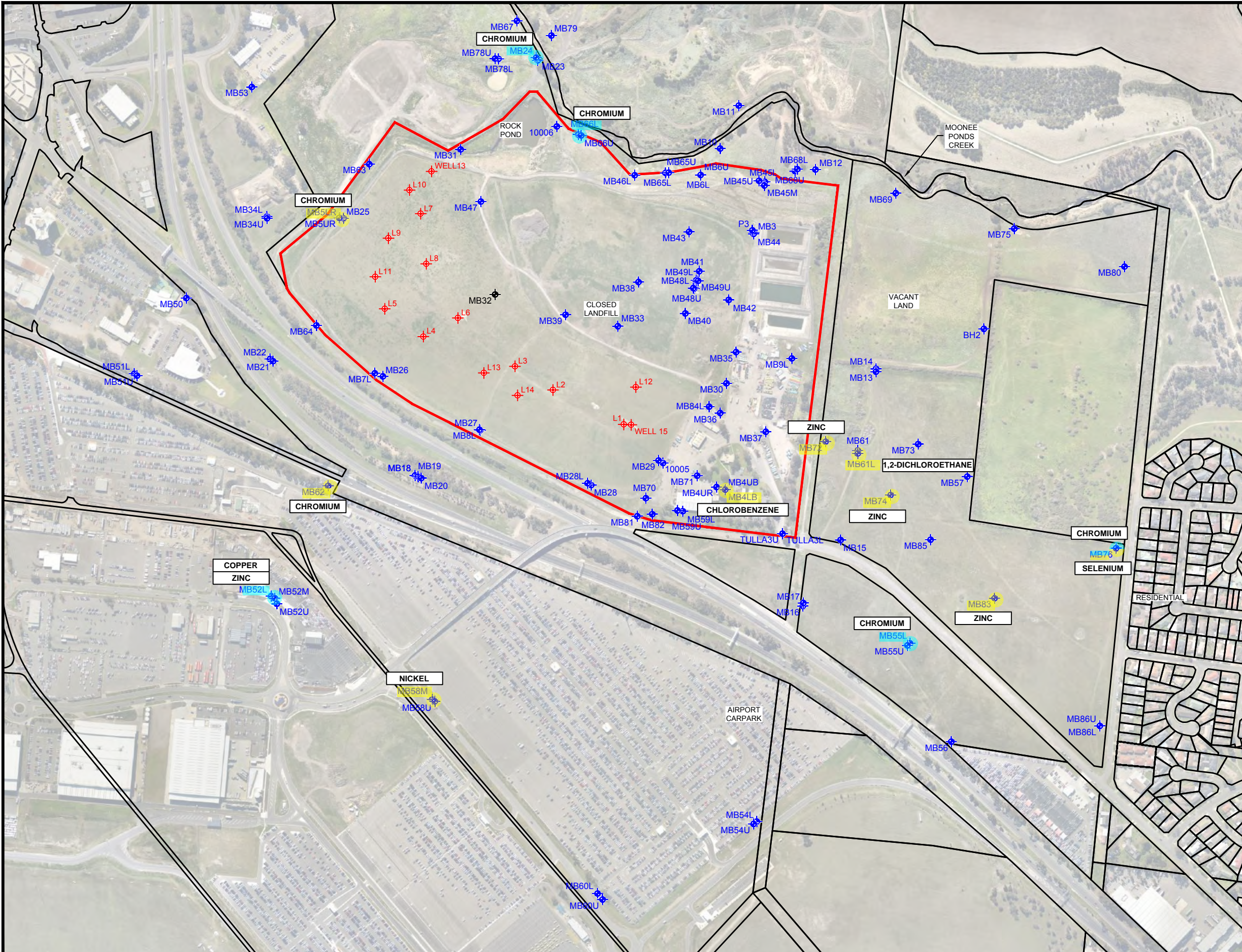
**GROUNDWATER ELEVATION CONTOURS
 - LOWER AQUIFER
 (AUGUST 2014)**

2014 TECHNICAL REPORT FOR AUDITOR REVIEW
 TULLAMARINE CLOSED LANDFILL
 WESTERN AVENUE
 WESTMEADOWS, VICTORIA

FIGURE
3B

PLOTTED: 27-Oct-2016, 02:41PM, Iziemelis

ATTACHED IMAGES: "1-1.jpg", "LowerTDSShading.jpg", "north.jpg", "site2.jpg", "UpperTDSShading.jpg"
 CAD FILE: O:\09_Projects\DELTEK Projects\Regular\2014\20143795.001A_TCL_Tulle_2014 TRAR\Figures_LAYOUT: 4
 MELBOURNE, AU



LEGEND

- ◆ MONITORING WELL
- ◆ MONITORING WELL (DESTROYED)
- ◆ LEACHATE EXTRACTION WELL
- ◆ STATISTICALLY INCREASING TRENDS
- ◆ NO STATISTICAL SIGNIFICANT TREND
- ANALYTE

NOTE: MANN-KENDALL TREND ANALYSIS WAS COMPLETED WITH 95% CONFIDENCE LEVEL USING ProUCL™ STATISTICAL ANALYSIS SOFTWARE

NOTE: ALL LOCATIONS ARE APPROXIMATE. DIMENSIONS IN METRES (m).

0 60 120 180 240 300
 SCALE 1:6000 (A3) METRES



The information included on this graphic representation has been compiled from a variety of sources and is subject to change without notice. Kleinfelder makes no representations or warranties, express or implied, as to accuracy, completeness, timeliness, or rights to the use of such information. This document is not intended for use as a land survey product nor is it designed or intended as a construction design document. The use or misuse of the information contained on this graphic representation is at the sole risk of the party using or misusing the information.

KLEINFELDER
 Bright People. Right Solutions.
 www.kleinfelder.com

PROJECT:	20143795.001A
DATE DRAWN:	12.11.14
DRAWN BY:	LZ
CHECKED BY:	MW
FILE NAME:	20143795.001A-2.dwg

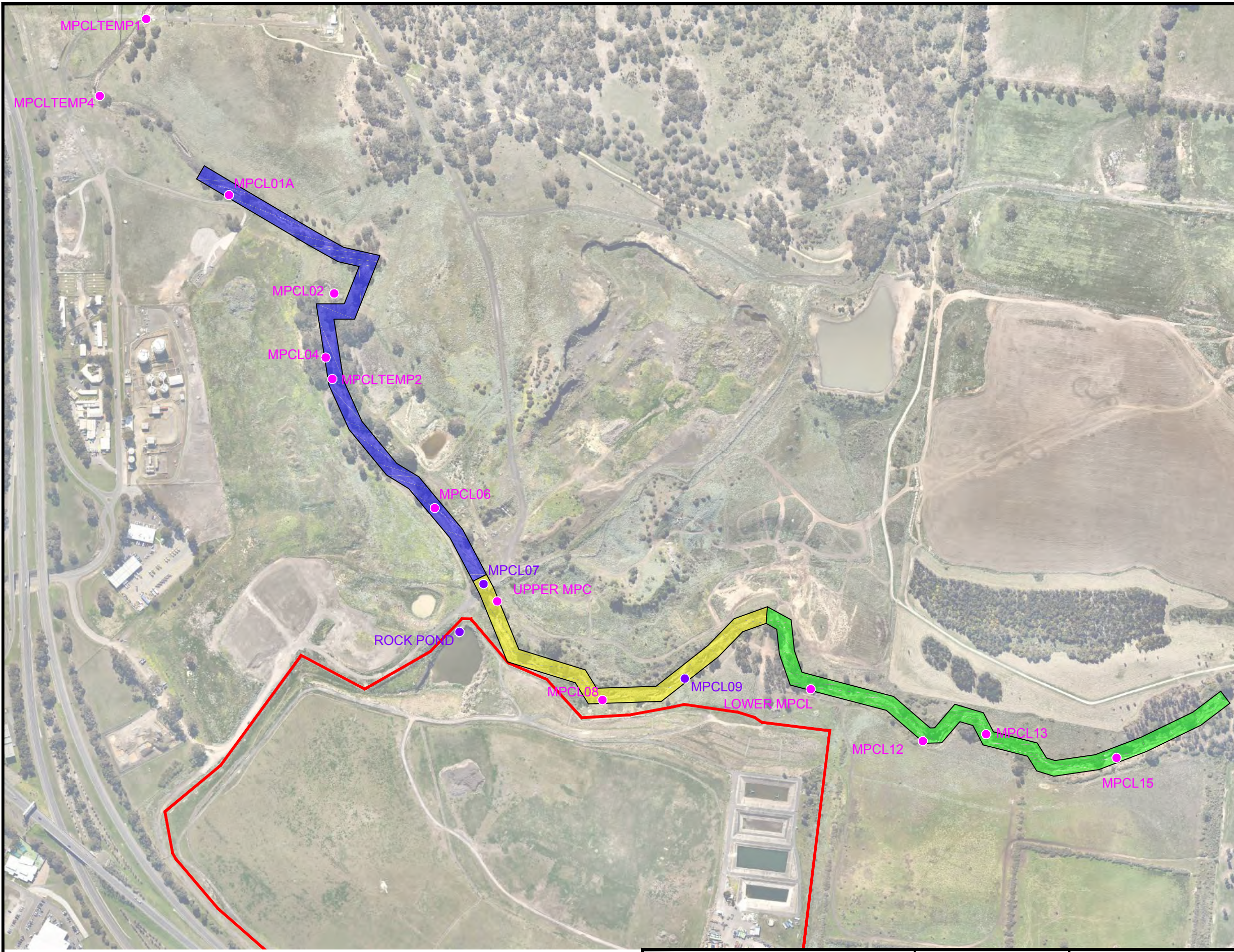
GROUNDWATER MONITORING LOCATIONS WITH STATISTICALLY INCREASING TRENDS (JANUARY 2007 - SEPTEMBER 2014)

2014 TECHNICAL REPORT FOR AUDITOR REVIEW
 TULLAMARINE CLOSED LANDFILL
 WESTERN AVENUE
 WESTMEADOWS, VICTORIA

FIGURE
4

PLOTTED: 27-Oct-2016, 02:41PM, Iziemelis

ATTACHED IMAGES: "1-1.jpg", "golfer_base.jpg", "LowerTDSShading.jpg", "north.jpg", "site2.jpg", "UpperTDSShading.jpg"
 CAD FILE: O:\09_Projects\DELTEK Projects\Regular\2014\20143795.001A_TCL_Tulle_2014 TRARIFigures_LAYOUT: 5
 MELBOURNE, AU



LEGEND

- SURFACE WATER SAMPLING LOCATIONS
- SAMPLING LOCATIONS WITH DATA LOGGERS INSTALLED
- ZONE 1
- ZONE 2
- ZONE 3

NOTE: ALL LOCATIONS ARE APPROXIMATE. DIMENSIONS IN METRES (m).

0 50 100 150 200 250
 SCALE 1:5000 (A3) METRES

N

The information included on this graphic representation has been compiled from a variety of sources and is subject to change without notice. Kleinfelder makes no representations or warranties, express or implied, as to accuracy, completeness, timeliness, or rights to the use of such information. This document is not intended for use as a land survey product nor is it designed or intended as a construction design document. The use or misuse of the information contained on this graphic representation is at the sole risk of the party using or misusing the information.

KLEINFELDER
 Bright People. Right Solutions.
 www.kleinfelder.com

PROJECT:	20143795.001A
DATE DRAWN:	12.11.14
DRAWN BY:	LZ
CHECKED BY:	MW
FILE NAME:	20143795.001A-2.dwg

**SURFACE WATER MONITORING
 LOCATIONS AND ZONES -
 JANUARY 2014**

2014 TECHNICAL REPORT FOR AUDITOR REVIEW
 TULLAMARINE CLOSED LANDFILL
 WESTERN AVENUE
 WESTMEADOWS, VICTORIA

FIGURE
5

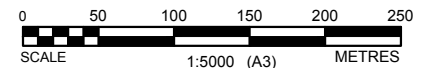


LEGEND

- SITE BOUNDARY
- ✱ MONITORING SITE
- 312118
5828481 SITE COORDINATES (GDA94 MGA55)

SOURCE: COORDINATES TAKEN FROM GHD (2015)

NOTE: ALL LOCATIONS ARE APPROXIMATE. DIMENSIONS IN METRES (m).



The information included on this graphic representation has been compiled from a variety of sources and is subject to change without notice. Kleinfelder makes no representations or warranties, express or implied, as to accuracy, completeness, timeliness, or rights to the use of such information. This document is not intended for use as a land survey product nor is it designed or intended as a construction design document. The use or misuse of the information contained on this graphic representation is at the sole risk of the party using or misusing the information.

PROJECT:	20143795.001A
DATE DRAWN:	12.11.14
DRAWN BY:	LZ
CHECKED BY:	MW
FILE NAME:	20143795.001A-2.dwg

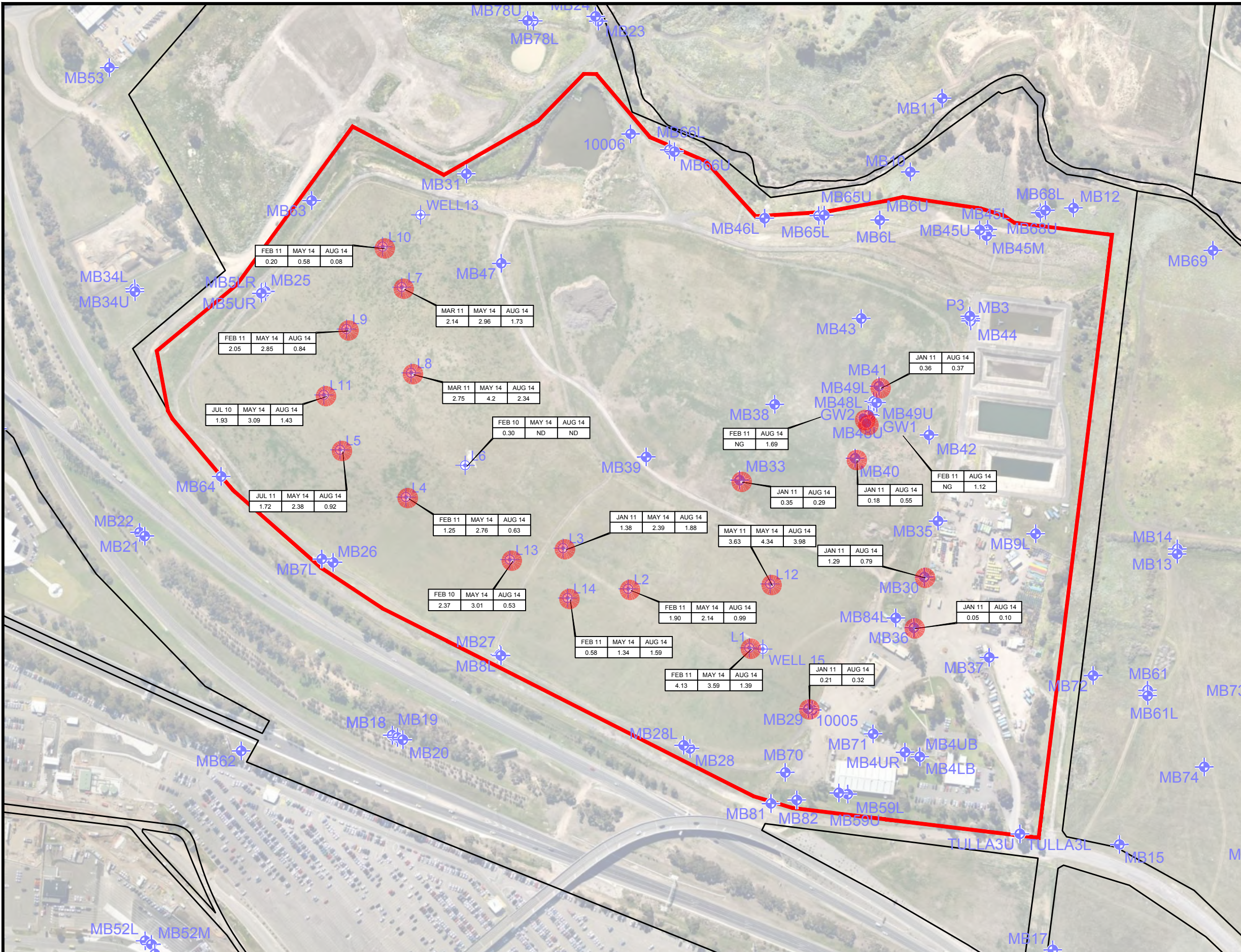
MACROINVERTEBRATE MONITORING LOCATIONS

2014 TECHNICAL REPORT FOR AUDITOR REVIEW
 TULLAMARINE CLOSED LANDFILL
 WESTERN AVENUE
 WESTMEADOWS, VICTORIA

FIGURE
6

PLOTTED: 27-Oct-2016, 02:41PM, Iziemelis

ATTACHED IMAGES: "1-1.jpg", "golfer_base.jpg", "LowerTDSShading.jpg", "north.jpg", "site2.jpg", "TCL_Tulle_2014 TRARIFigures_LAYOUT: 7
 CAD FILE: O:\09_Projects\DELTEK Projects\Regular\2014\20143795.001A_TCL_Tulle_2014 TRARIFigures_LAYOUT: 7
 MELBOURNE, AU



LEGEND

- MONITORING WELL
- LEACHATE EXTRACTION WELL
- PUMP TRIAL WELLS
- LNAPL PRESENT IN WELL
- 1.12 LNAPL THICKNESS (metres)
- ND NOT DETECTED
- NG NOT GAUGED

NOTE:

- MAY 2014 DATA IS PRE-EXTRACTION LNAPL THICKNESS (LEACHATE EXTRACTION WELLS ONLY)
- AUGUST 2014 DATA IS POST-EXTRACTION LNAPL THICKNESS (LEACHATE EXTRACTION WELLS ONLY)

NOTE: ALL LOCATIONS ARE APPROXIMATE. DIMENSIONS IN METRES (m).

0 35 70 105 140 175
 SCALE 1:3500 (A3) METRES

The information included on this graphic representation has been compiled from a variety of sources and is subject to change without notice. Kleinfelder makes no representations or warranties, express or implied, as to accuracy, completeness, timeliness, or rights to the use of such information. This document is not intended for use as a land survey product nor is it designed or intended as a construction design document. The use or misuse of the information contained on this graphic representation is at the sole risk of the party using or misusing the information.

KLEINFELDER
 Bright People. Right Solutions.
 www.kleinfelder.com

PROJECT:	20143427.001A
DATE DRAWN:	03.10.14
DRAWN BY:	LZ
CHECKED BY:	MW
FILE NAME:	20143795.001A-2.dwg

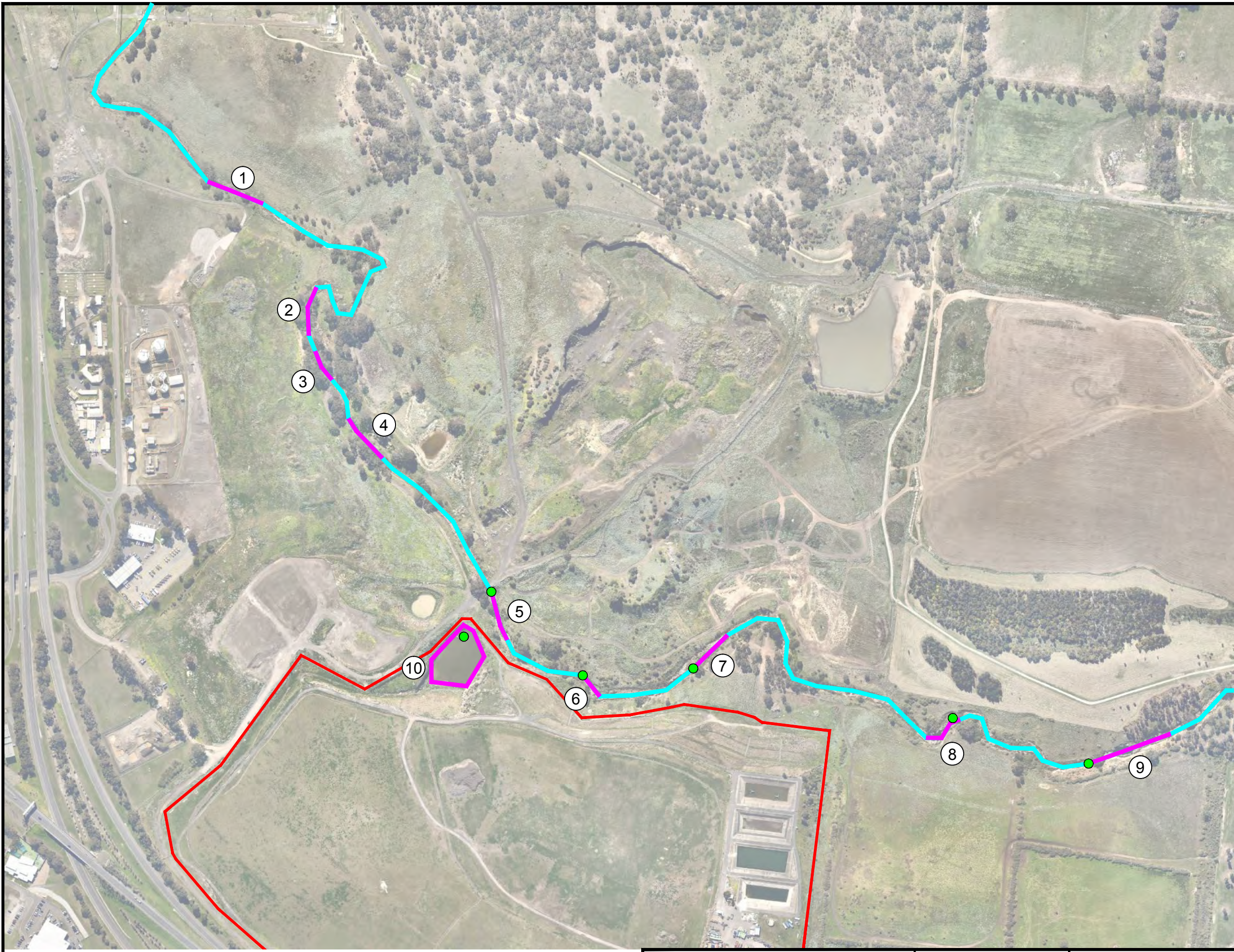
**LNAPL DISTRIBUTION
 HISTORICAL COMPARISON**

2014 TECHNICAL REPORT FOR AUDITOR REVIEW
 TULLAMARINE CLOSED LANDFILL
 WESTERN AVENUE
 WESTMEADOWS, VICTORIA

FIGURE
7

ATTACHED IMAGES: "1-1.jpg", "golfer_base.jpg", "LowerTDSShading.jpg", "north.jpg", "site2.jpg", "UpperTDSShading.jpg"
 CAD FILE: O:\09_Projects\DELTEK Projects\Regular\2014\20143795.001A_TCL_Tulle_2014 TRAR\Figures_LAYOUT_8
 MELBOURNE, AU

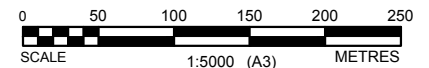
PLOTTED: 27-Oct-2016, 02:41PM, Iziemelis



LEGEND

- MOONEE PONDS CREEK
- GROWLING GRASS FROG SURVEY LOCATIONS
- GROWLING GRASS FROG RECORDS

NOTE: ALL LOCATIONS ARE APPROXIMATE.
 DIMENSIONS IN METRES (m).



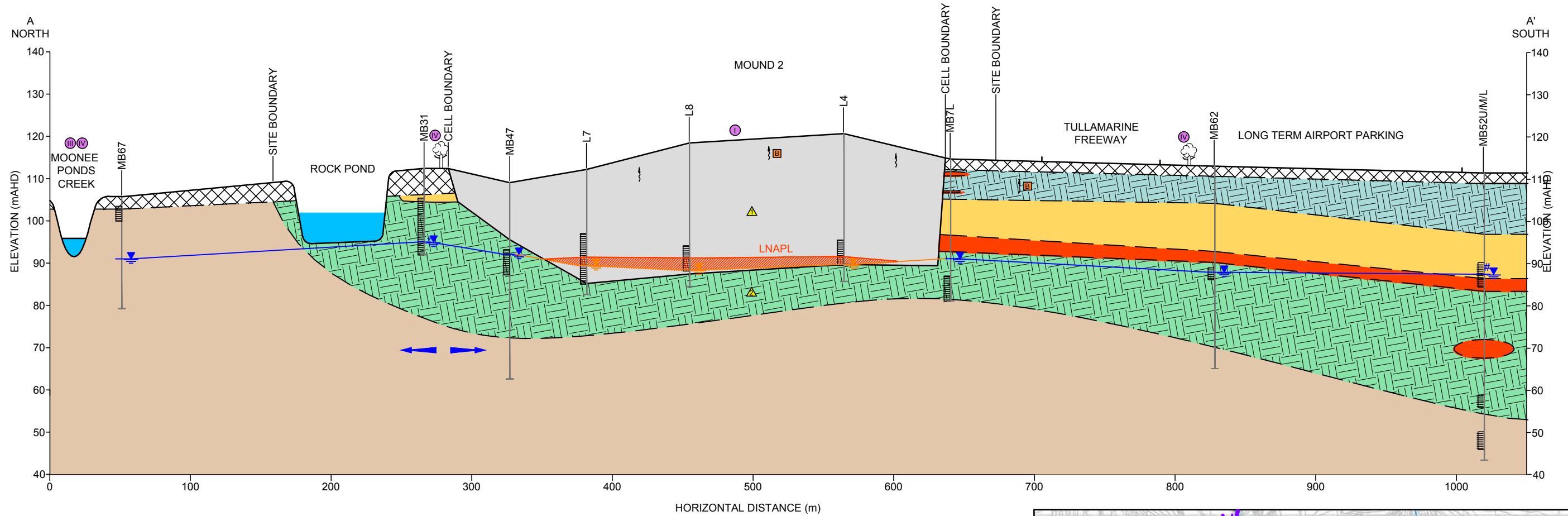
The information included on this graphic representation has been compiled from a variety of sources and is subject to change without notice. Kleinfelder makes no representations or warranties, express or implied, as to accuracy, completeness, timeliness, or rights to the use of such information. This document is not intended for use as a land survey product nor is it designed or intended as a construction design document. The use or misuse of the information contained on this graphic representation is at the sole risk of the party using or misusing the information.

PROJECT:	20143795.001A
DATE DRAWN:	12.11.14
DRAWN BY:	LZ
CHECKED BY:	MW
FILE NAME:	20143795.001A-2.dwg

FROG SURVEY LOCATIONS

2014 TECHNICAL REPORT FOR AUDITOR REVIEW
 TULLAMARINE CLOSED LANDFILL
 WESTERN AVENUE
 WESTMEADOWS, VICTORIA

FIGURE
8



LEGEND

- LANDFILL WASTE MASS
- NEWER VOLCANICS (Qvn) FRACTURED BASALT
- BRIGHTON GROUP (Tb)
- OLDER VOLCANICS (Tvo) FRACTURED BASALT
- WERRIBEE FORMATION EQUIVALENT (Tw)
- SILURIAN BEDROCK (Sud)
- CLAY
- FILL
- GROUNDWATER LEVEL (MARCH 2012)
- GROUNDWATER LEVEL (APRIL 2014)
- GROUNDWATER LEVEL (AUGUST 2014)
- LANDFILL SURFACE
- NATURAL SURFACE
- INFERRED GEOLOGY CONTACT
- MB62 GROUNDWATER MONITORING WELL
- L9 LEACHATE EXTRACTION WELL
- LEACHATE (MAY 2014)
- INFERRED GROUNDWATER FLOW DIRECTION

POTENTIAL SOURCES

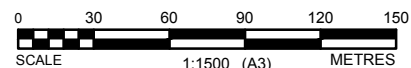
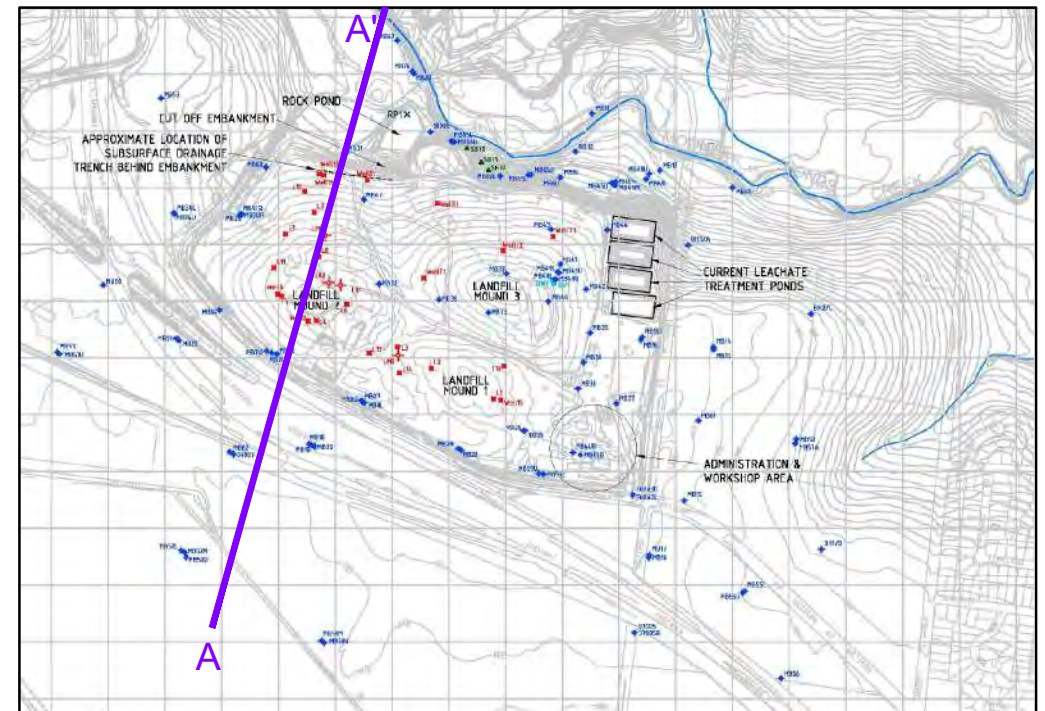
- LANDFILL WASTE MASS.
- GROUNDWATER (LNAPL OR DISSOLVED PHASE)

POTENTIAL PATHWAYS

- LATERAL AND VERTICAL MIGRATION THROUGH SUBSURFACE GEOLOGY
- VERTICAL VAPOUR MIGRATION
- DIRECT RELEASE TO SURFACE WATER

POTENTIAL RECEPTORS

- ON-SITE EMPLOYEES AND VISITORS.
- SUB-SURFACE UTILITY WORKERS.
- SURFACE WATER
- FLORA AND FAUNA
- STRUCTURES



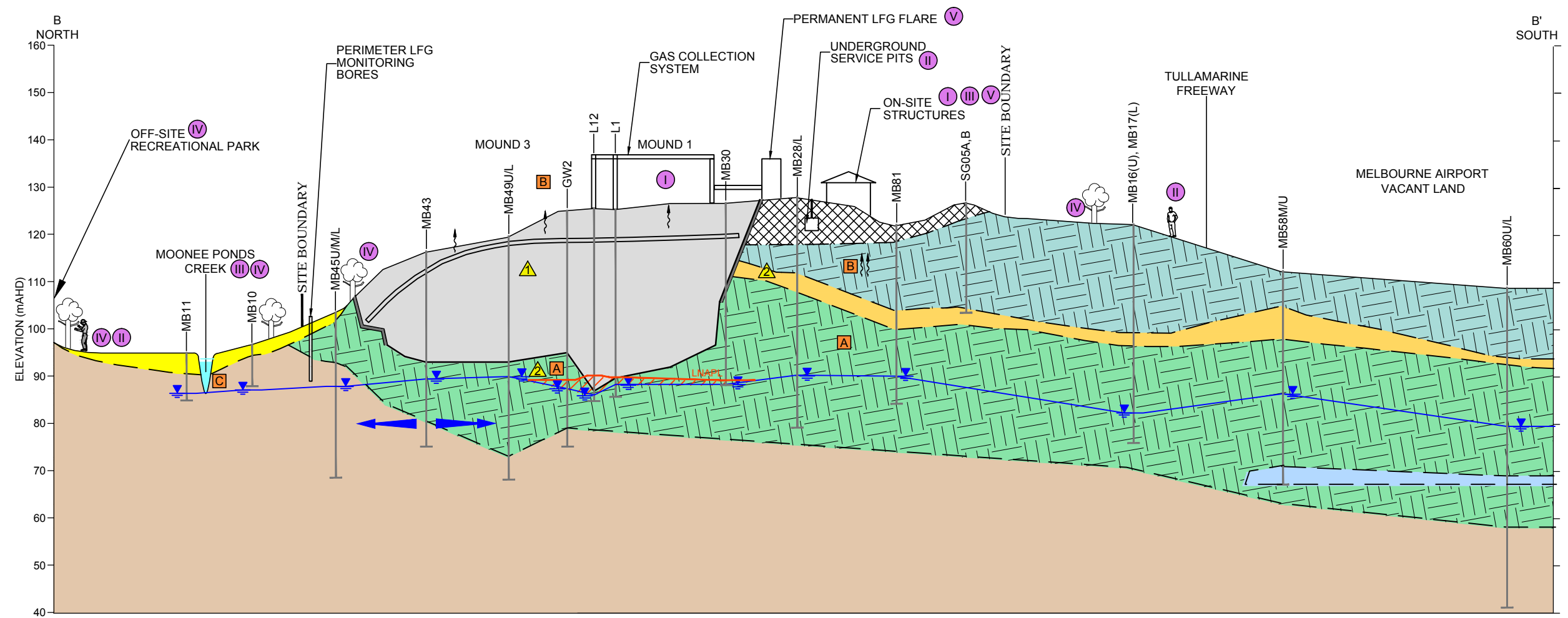
- ROCK POND DEPTH IS INDICATIVE ONLY AND BASED ON THE FINDINGS OF KLEINFELDER'S HYDROGEOLOGICAL ASSESSMENT (2015) FOR THE SITE AND KLEINFELDER'S SURFACE WATER SALINITY ASSESSMENT (2014) FOR THE SITE
- INDICATIVE CREEK DEPTH DATA OBTAINED FROM VIC GOVERNMENT (LAND.VIC.GOV.AU), 2015. INTERACTIVE MAP - CONTOURS. VIEWED 30-OCTOBER-2015. AVAILABLE AT [HTTP://SERVICES.LAND.VIC.GOV.AU/MAPS/INTERACTIVE.JSP](http://services.land.vic.gov.au/maps/interactive.jsp)

The information included on this graphic representation has been compiled from a variety of sources and is subject to change without notice. Kleinfelder makes no representations or warranties, express or implied, as to accuracy, completeness, timeliness, or rights to the use of such information. This document is not intended for use as a land survey product nor is it designed or intended as a construction design document. The use or misuse of the information contained on this graphic representation is at the sole risk of the party using or misusing the information.

PROJECT:	20143795.001A
DATE DRAWN:	12.11.14
DRAWN BY:	LZ
CHECKED BY:	MW
FILE NAME:	20143795.001A-2.dwg

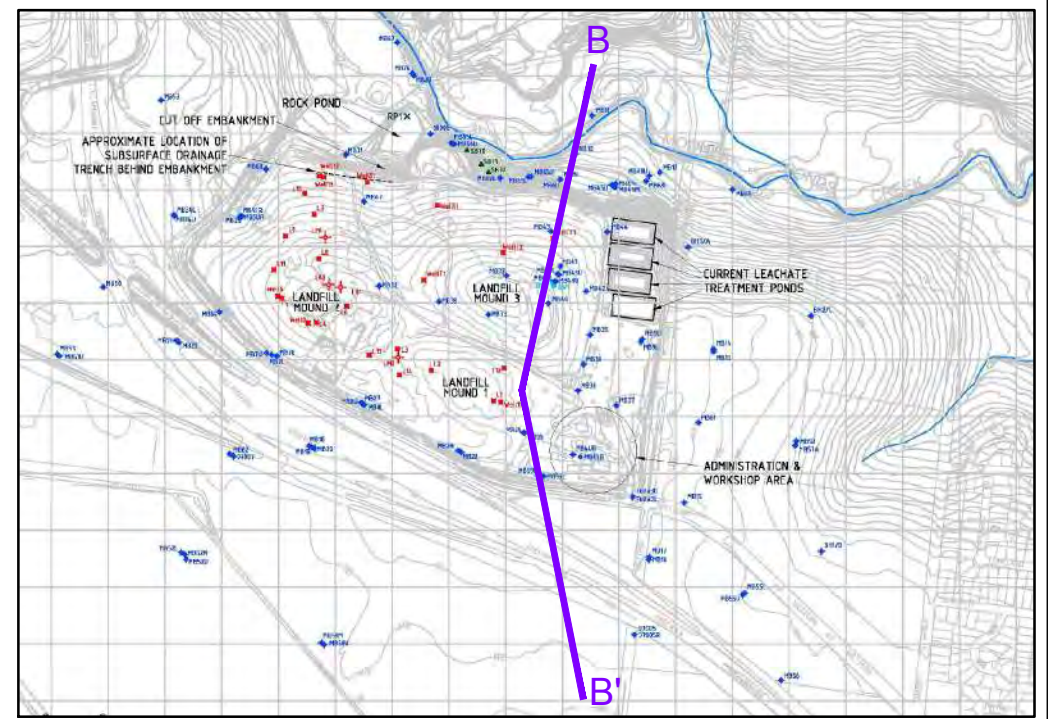
<p>NORTH-SOUTH (WEST) CROSS SECTION</p>
<p>2014 TECHNICAL REPORT FOR AUDITOR REVIEW TULLAMARINE CLOSED LANDFILL WESTERN AVENUE WESTMEADOWS, VICTORIA</p>

FIGURE
9A

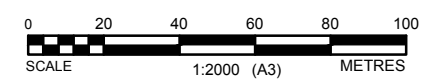


- LEGEND**
- SEDIMENTARY DEPOSITS
 - LANDFILL WASTE MASS
 - NEWER VOLCANICS (Qvn) FRACTURED BASALT
 - BRIGHTON GROUP (Tb)
 - OLDER VOLCANICS (Tvo) FRACTURED BASALT
 - WERRIBEE FORMATION EQUIVALENT (Tw)
 - SILURIAN BEDROCK (Sud)
 - FILL
 - GROUNDWATER LEVEL (AUGUST 2014)
 - LANDFILL SURFACE
 - NATURAL SURFACE
 - APPROXIMATE LOCATION OF CLAY LINER
 - INFERRED GEOLOGY CONTACT
 - MB62 GROUNDWATER MONITORING WELL
 - L9 LEACHATE EXTRACTION WELL
 - INFERRED GROUNDWATER FLOW DIRECTION

- POTENTIAL SOURCES**
- LANDFILL WASTE MASS.
 - GROUNDWATER (LNAPL OR DISSOLVED PHASE)
- POTENTIAL PATHWAYS**
- LATERAL AND VERTICAL MIGRATION THROUGH SUBSURFACE GEOLOGY
 - VERTICAL VAPOUR MIGRATION
 - DIRECT RELEASE TO SURFACE WATER
- POTENTIAL RECEPTORS**
- ON-SITE EMPLOYEES AND VISITORS.
 - SUB-SURFACE UTILITY WORKERS.
 - SURFACE WATER
 - FLORA AND FAUNA
 - STRUCTURES



NOTE: PRE MAY 2014 LNAPL THICKNESS FOR LNAPL EXTRACTION WELLS HAVE BEEN PRESENTED ON THIS MODEL AS A CONSERVATIVE APPROACH DUE TO POTENTIALLY SLOW LNAPL REBOUND



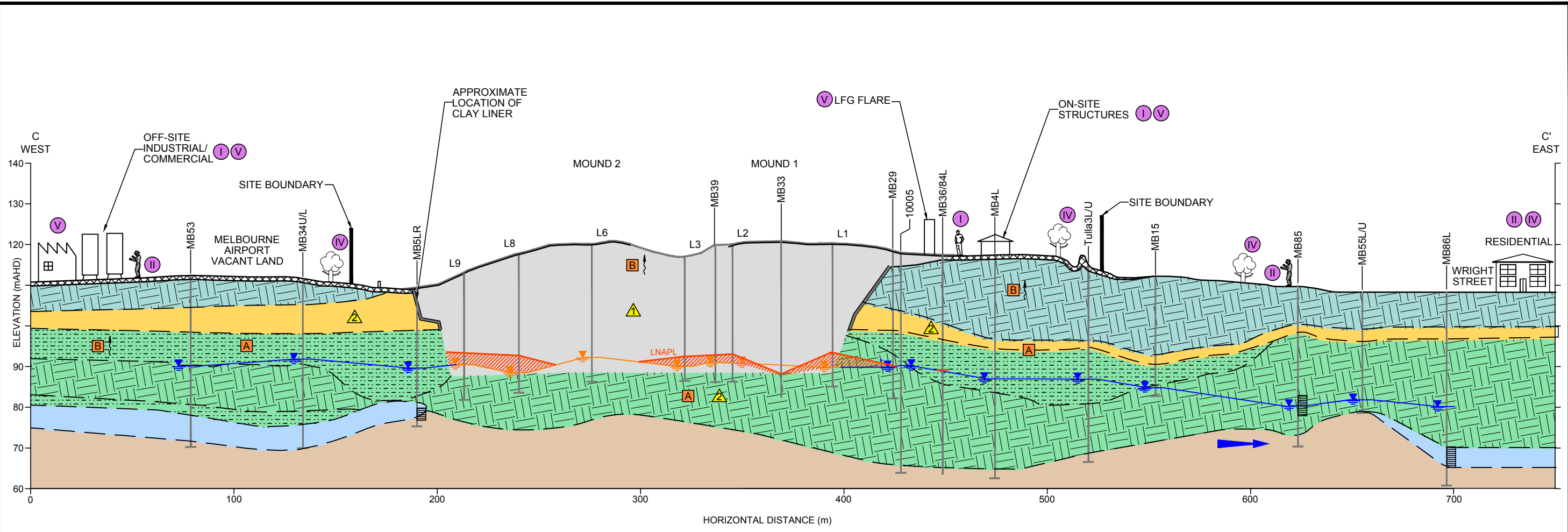
- BASE LAYOUT OF GEOLOGICAL CROSS-SECTION SOURCED FROM GOLDER (2007) SECTION A – A', REPORT NO. 04613711/602, FIGURE 13.
- INDICATIVE CREEK DEPTH DATA OBTAINED FROM VIC GOVERNMENT (LAND.VIC.GOV.AU), 2015. INTERACTIVE MAP - CONTOURS. VIEWED 30-OCTOBER-2015. AVAILABLE AT [HTTP://SERVICES.LAND.VIC.GOV.AU/MAPS/INTERACTIVE.JSP](http://services.land.vic.gov.au/maps/interactive.jsp)
- ROCK POND DEPTH OBTAINED FROM FIGURE 3 OF THE GOLDER (2007) HYDROGEOLOGICAL CONCEPTUAL MODEL

PROJECT:	20143795.001A
DATE DRAWN:	12.11.14
DRAWN BY:	LZ
CHECKED BY:	MW
FILE NAME:	20143795.001A-2.dwg

NORTH-SOUTH (EAST) CROSS SECTION

2014 TECHNICAL REPORT FOR AUDITOR REVIEW
 TULLAMARINE CLOSED LANDFILL
 WESTERN AVENUE
 WESTMEADOWS, VICTORIA

PLOTTED: 27-Oct-2016, 02:41PM, Iziemelis



LEGEND

- LANDFILL WASTE MASS
- NEWER VOLCANICS (Qvn) FRACTURED BASALT
- BRIGHTON GROUP (Tb)
- OLDER VOLCANICS (Tvo) FRACTURED BASALT
- WERRIBEE FORMATION EQUIVALENT (Tw)
- SILURIAN BEDROCK (Sud)
- WEATHERED BASALT
- FILL
- GROUNDWATER LEVEL (APRIL 2014)
- GROUNDWATER LEVEL (AUGUST 2014)
- LANDFILL SURFACE
- NATURAL SURFACE
- APPROXIMATE LOCATION OF CLAY LINER
- INFERRED GEOLOGY CONTACT
- MB62 GROUNDWATER MONITORING WELL
- L9 LEACHATE EXTRACTION WELL
- LEACHATE (MAY 2014)
- INFERRED GROUNDWATER FLOW DIRECTION

POTENTIAL SOURCES

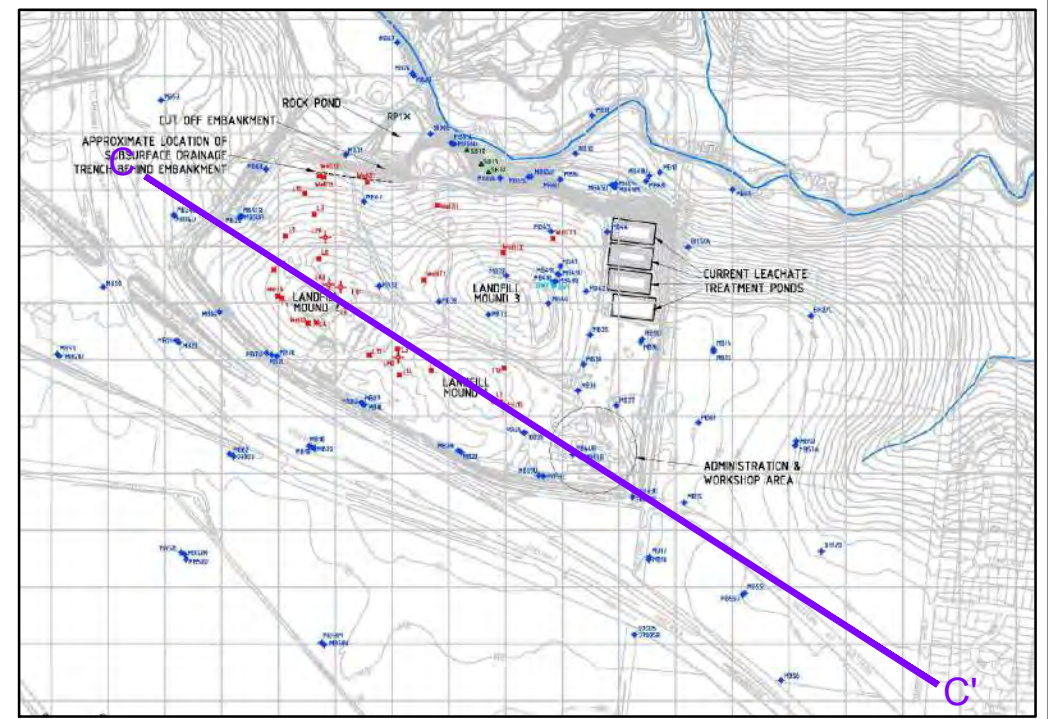
- LANDFILL WASTE MASS.
- GROUNDWATER (LNAPL OR DISSOLVED PHASE)

POTENTIAL PATHWAYS

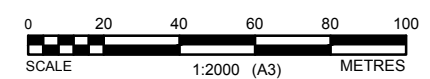
- LATERAL AND VERTICAL MIGRATION THROUGH SUBSURFACE GEOLOGY
- VERTICAL VAPOUR MIGRATION
- DIRECT RELEASE TO SURFACE WATER

POTENTIAL RECEPTORS

- ON-SITE EMPLOYEES AND VISITORS.
- SUB-SURFACE UTILITY WORKERS.
- SURFACE WATER
- FLORA AND FAUNA
- STRUCTURES



NOTE: PRE MAY 2014 LNAPL THICKNESS FOR LNAPL EXTRACTION WELLS HAVE BEEN PRESENTED ON THIS MODEL AS A CONSERVATIVE APPROACH DUE TO POTENTIALLY SLOW LNAPL REBOUND



The information included on this graphic representation has been compiled from a variety of sources and is subject to change without notice. Kleinfelder makes no representations or warranties, express or implied, as to accuracy, completeness, timeliness, or rights to the use of such information. This document is not intended for use as a land survey product nor is it designed or intended as a construction design document. The use or misuse of the information contained on this graphic representation is at the sole risk of the party using or misusing the information.

SOURCE: BASE LAYOUT OF GEOLOGICAL CROSS-SECTION SOURCED FROM GOLDER (2007) SECTION A - A', REPORT NO. 04613711/602, FIGURE 13.

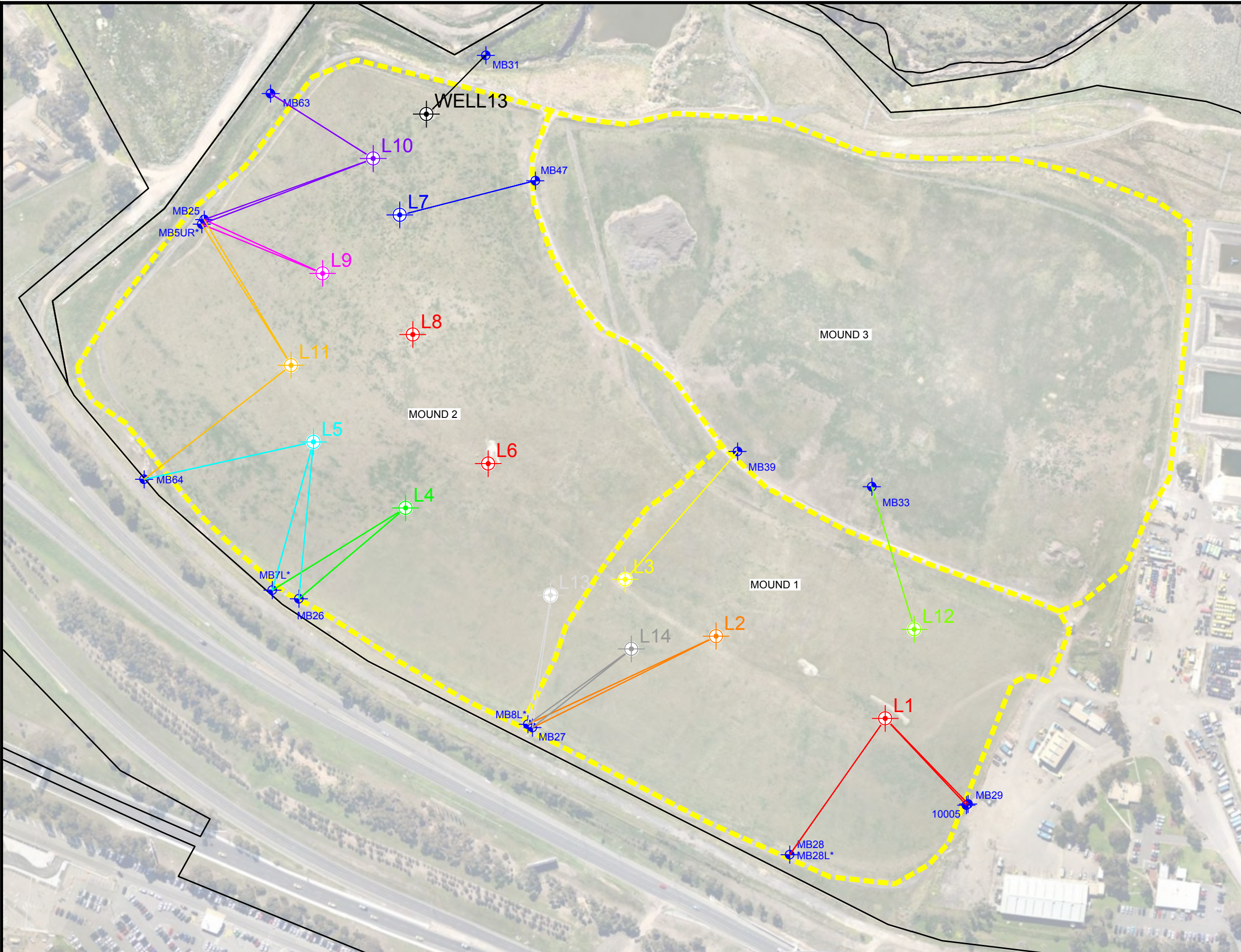
PROJECT:	20143795.001A
DATE DRAWN:	12.11.14
DRAWN BY:	LZ
CHECKED BY:	MW
FILE NAME:	20143795.001A-2.dwg

WEST-EAST CROSS SECTION	9C



ATTACHED IMAGES: "1-1.jpg", "golde base.jpg", "LowerTDSShading.jpg", "north.jpg", "site2.jpg", "site2.jpg", "UpperTDSShading.jpg"
 CAD FILE: 0:09_P\Projects\DELTEK\Projects\Regular\2014\20143795.001A_TCL_Tulla_2014 TRAR\Figures LAYOUT: 9C
 MELBOURNE, AU

PLOTTED: 27-Oct-2016, 02:41PM, iziemelis

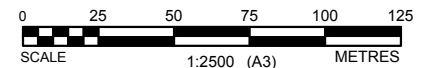
ATTACHED IMAGES: "1-1.jpg", "golfer_base.jpg", "LowerTDSShading.jpg", "north.jpg", "site2.jpg", "UpperTDSShading.jpg"
 CAD FILE: O:\09_Projects\DELTEK Projects\Regular\2014\20143795.001A_TCL_Tulla_2014 TRAR\Figures LAYOUT: 10
 MELBOURNE, AU



LEGEND

-  MONITORING WELL
-  LEACHATE EXTRACTION WELL

NOTE: ALL LOCATIONS ARE APPROXIMATE.
 DIMENSIONS IN METRES (m).



The information included on this graphic representation has been compiled from a variety of sources and is subject to change without notice. Kleinfelder makes no representations or warranties, express or implied, as to accuracy, completeness, timeliness, or rights to the use of such information. This document is not intended for use as a land survey product nor is it designed or intended as a construction design document. The use or misuse of the information contained on this graphic representation is at the sole risk of the party using or misusing the information.



PROJECT:	20143795.001A
DATE DRAWN:	12.11.14
DRAWN BY:	LZ
CHECKED BY:	MW
FILE NAME:	20143795.001A-2.dwg

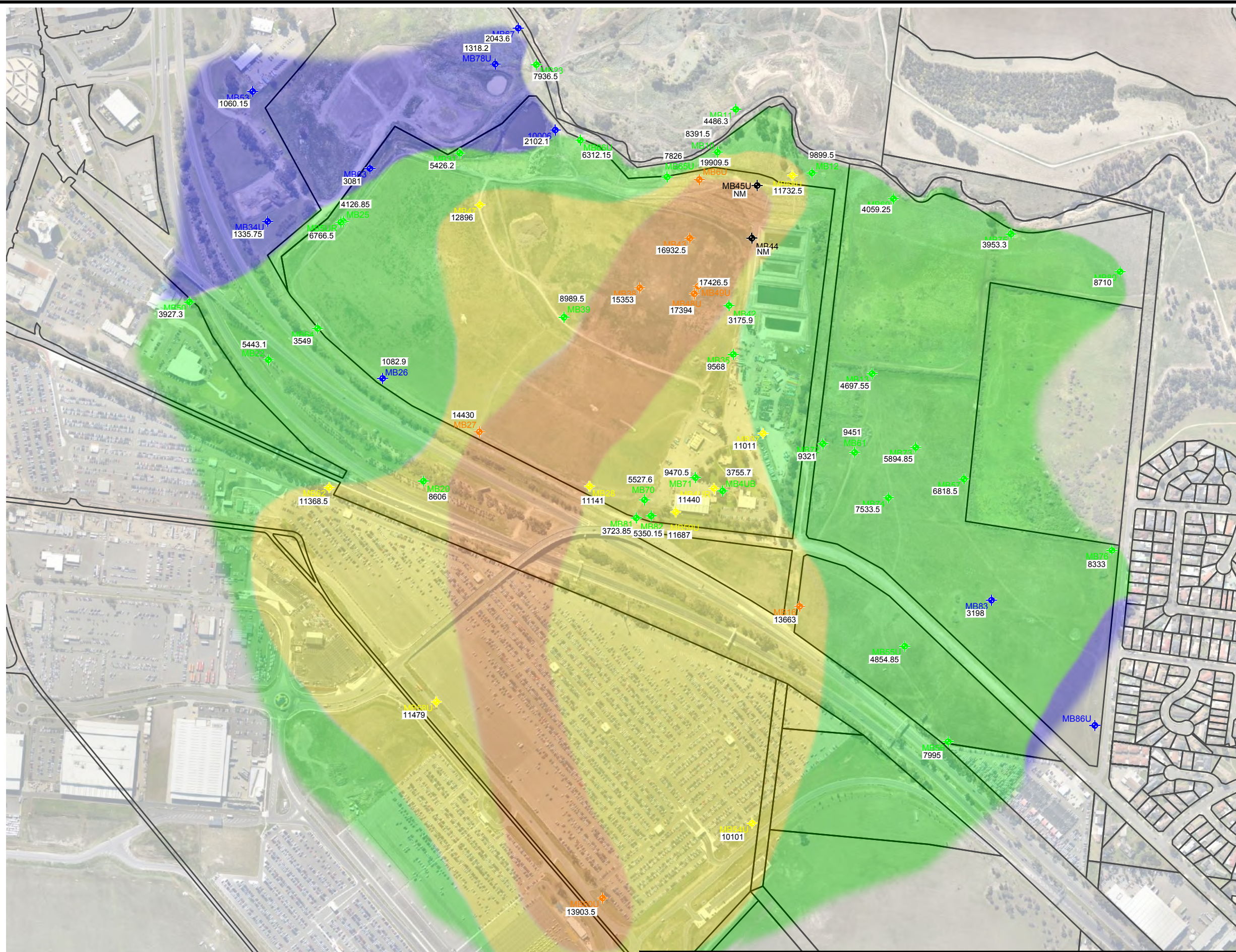
LEACHATE AND SURROUNDING GROUNDWATER WELLS

2014 TECHNICAL REPORT FOR AUDITOR REVIEW
 TULLAMARINE CLOSED LANDFILL
 WESTERN AVENUE
 WESTMEADOWS, VICTORIA

FIGURE
10

PLOTTED: 27-Oct-2016, 02:41PM, Iziemelis

ATTACHED IMAGES: "1-1.jpg", "golfer_base.jpg", "LowerTDSShading.jpg", "north.jpg", "site2.jpg", "UpperTDSShading.jpg"
 CAD FILE: "O:\09_Projects\DELTEK Projects\Regular\2014\20143795.001A_TCL_Tulla_2014 TRAR\Figures_LAYOUT: 11A MELBOURNE, AU"

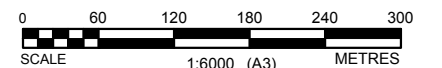


LEGEND

INTERPRETED	MEASURED	TOTAL DISSOLVED SOLIDS (mg/L)
		<3500
		3500-10,000
		10,000-13,000
		13,000-27,000
		>27,000

REFER TABLE 1
 NOTE: SHADING IS INTERPRETED FROM CONCENTRATIONS WITHIN BORES AND IS INDICATIVE ONLY

NOTE: ALL LOCATIONS ARE APPROXIMATE. DIMENSIONS IN METRES (m).



The information included on this graphic representation has been compiled from a variety of sources and is subject to change without notice. Kleinfelder makes no representations or warranties, express or implied, as to accuracy, completeness, timeliness, or rights to the use of such information. This document is not intended for use as a land survey product nor is it designed or intended as a construction design document. The use or misuse of the information contained on this graphic representation is at the sole risk of the party using or misusing the information.

PROJECT:	20143795.001A
DATE DRAWN:	12.11.14
DRAWN BY:	LZ
CHECKED BY:	MW
FILE NAME:	20143795.001A-2.dwg

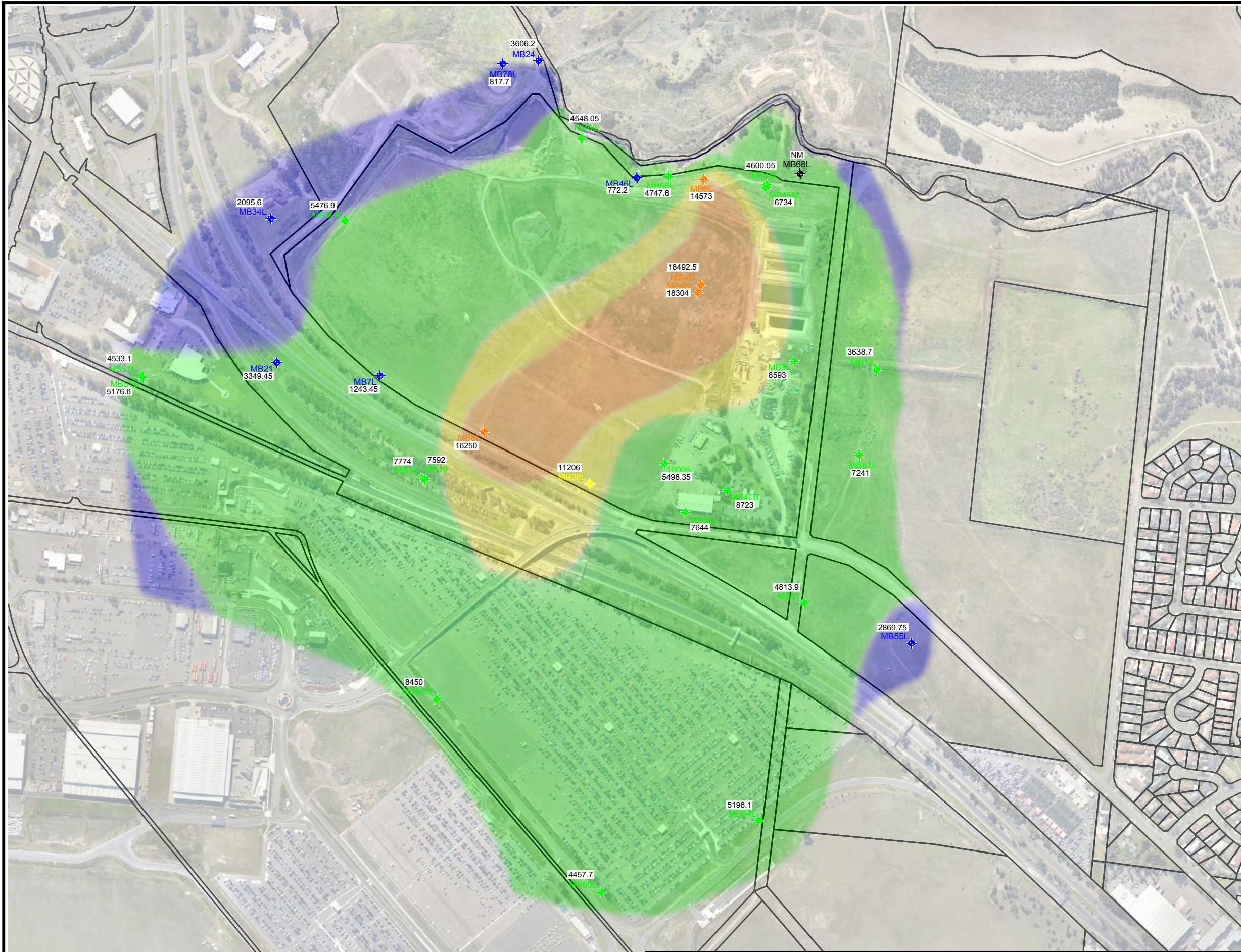
**TDS CONTOURS
 UPPER AQUIFER
 (AUGUST 2014)**

2014 TECHNICAL REPORT FOR AUDITOR REVIEW
 TULLAMARINE CLOSED LANDFILL
 WESTERN AVENUE
 WESTMEADOWS, VICTORIA

FIGURE
11A

PLOTTED: 27-Oct-2016, 02:41PM, Iziemelis

ATTACHED IMAGES: "1-1.jpg" "golfer base.jpg" "LowerTDSShading.jpg" "north.jpg" "site2.jpg" "UpperTDSShading.jpg"
 CAD FILE: O:\09_Projects\DELTEK Projects\Regular\2014\20143795.001A_TCL_Tulla_2014 TRAR\Figures LAYOUT: 11B
 MELBOURNE, AU

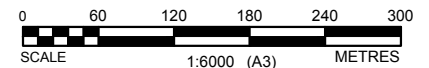


LEGEND

INTERPRETED	MEASURED	TOTAL DISSOLVED SOLIDS (mg/L)
[Purple Box]	[Blue Diamond]	<3500
[Green Box]	[Green Diamond]	3500-10,000
[Yellow Box]	[Yellow Diamond]	10,000-13,000
[Orange Box]	[Orange Diamond]	13,000-27,000
[Red Box]	[Red Diamond]	>27,000

REFER TABLE 1
 NOTE: SHADING IS INTERPRETED FROM CONCENTRATIONS WITHIN BORES AND IS INDICATIVE ONLY

NOTE: ALL LOCATIONS ARE APPROXIMATE. DIMENSIONS IN METRES (m).



The information included on this graphic representation has been compiled from a variety of sources and is subject to change without notice. Kleinfelder makes no representations or warranties, express or implied, as to accuracy, completeness, timeliness, or rights to the use of such information. This document is not intended for use as a land survey product nor is it designed or intended as a construction design document. The use or misuse of the information contained on this graphic representation is at the sole risk of the party using or misusing the information.

PROJECT:	20143795.001A
DATE DRAWN:	12.11.14
DRAWN BY:	LZ
CHECKED BY:	MW
FILE NAME:	20143795.001A-2.dwg

**TDS CONTOURS
 LOWER AQUIFER
 (AUGUST 2014)**

2014 TECHNICAL REPORT FOR AUDITOR REVIEW
 TULLAMARINE CLOSED LANDFILL
 WESTERN AVENUE
 WESTMEADOWS, VICTORIA

FIGURE
11B