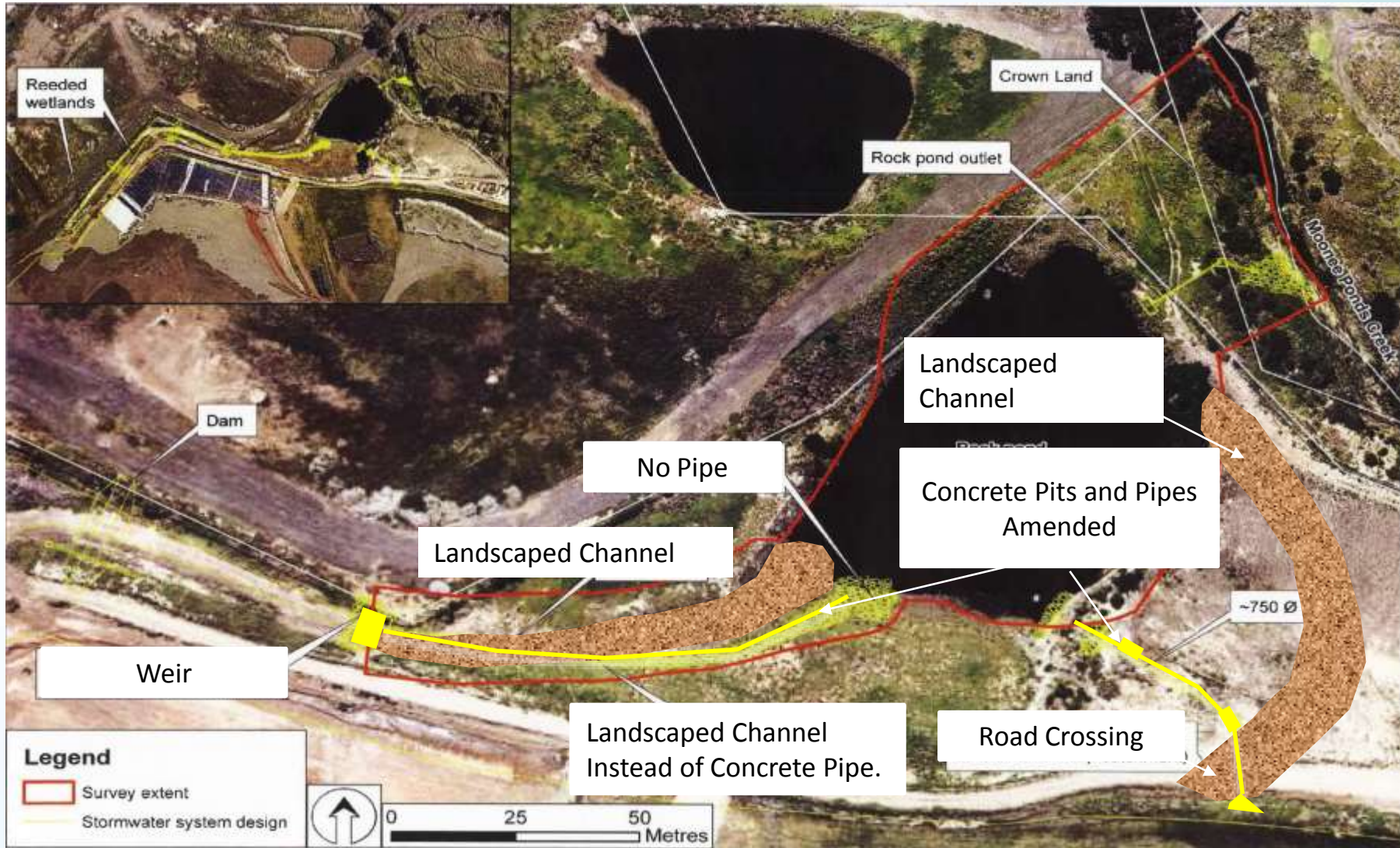




Tullamarine Landfill Community Meeting

30 March 2016

Stormwater Connection – Improved Design



Stormwater Connection Improvements in Design

- ▶ Increased frog habitat area
- ▶ Less concrete
- ▶ Softer Landscaping approach
- ▶ Less likelihood of erosion
- ▶ Improved water quality
- ▶ Increased safety

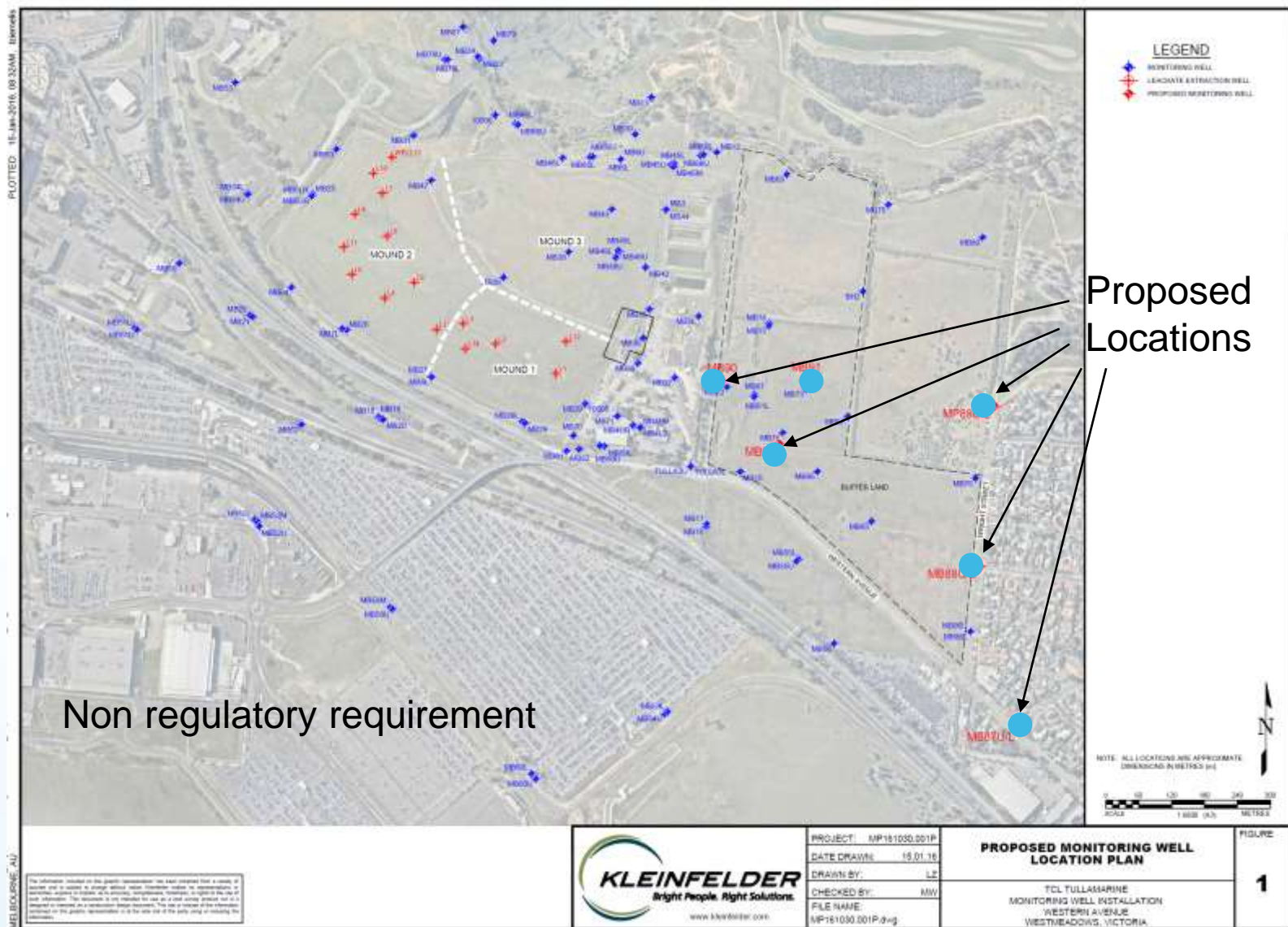
Groundwater Update

- ▶ Currently Updating the Management and Monitoring Plan
- ▶ Information on current monitoring frequency will be provided with Technical Review information
- ▶ *TECHNICAL REVIEW*
- ▶ Currently with the Auditor
- ▶ The Technical Review Report will be ready for the community by end of April
- ▶ Monitoring & Management Plan, including contingency requirements, will be included
- ▶ Upon receipt of final report, welcome a special briefing session with community before next meeting

New Landfill Gas Perimeter Boreholes



New Groundwater Monitoring Boreholes



Air Quality Testing Update

- ▶ Flare sampling for methane destruction efficiency will take place in April 2016.
- ▶ A second full emissions test is to be completed after methane testing is undertaken during May/June when climate conditions are colder.
- ▶ Ambient air monitoring design and procedure being developed by our experts. This will be ready in June.
- ▶ Ambient air monitoring will be undertaken concurrently with next emissions testing in second half of 2016.

Flare Sampling Equipment - Calibrated In-Situ Equipment

Methane (CH_4), Temp, Pressure, Flow



Flare Equipment - New Sample Location



Flare Equipment

Sample
Canister for
Laboratory



Inlet Sample
Point

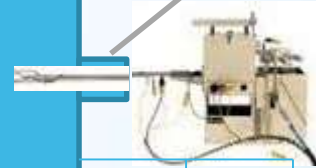
Water Knock
Out Pot

Blower

Calibrated
Data
Collection
System
Flow
Temperature
Methane %

Landfill Gas Inlet

Outlet Sample
Point



Methane
Detector



Sample
Canister for
Laboratory



Combustion
Air Inlet



Tullamarine Landfill Flare Data - February 2016

